

LINKFLEX-AD1

LinkFlex XLR Interface Preamp Audio Adapter
(For Camera&Phone)



Foreword

Thanks for purchasing Comica LINKFLEX-AD1 XLR Interface Preamp Audio Adapter (For Camera&Phone).

This product can help to transfer XLR microphone to smartphone or camera for audio recording. It is designed with functions of supporting adjustable sensitivity, smartphone and camera switch, real-time monitoring, etc. which can bring you better experience and sound quality effect.

Please carefully read this instruction manual before use. The product has been precisely calibrated at the factory, and please do not assemble and disassemble the parts by yourself, or the warranty will be invalid!

Notice

- ⚠ When used with smartphone, please purchase separate audio cable adapter with corresponding interface.
- ⚠ For the Android system smartphone, the microphone works well in default audio mode, but default video mode will happen with incompatibility trouble while working with some smartphone; (Then we suggest you try the 3rd party's video APP);
For the iOS system phone, the microphone works well in all default audio mode , video mode, and 3rd party's APP.
- ⚠ While used for smartphone, please set the smartphone to fly mode to avoid any interference.
- ⚠ Please stay away from heat source or interference source when using.
- ⚠ Please avoid falling, collision or impact when using.
- ⚠ Please do not use in rain or humidity, or there will be a risk of shot circuit.

Main Functions

- . For both camera and smartphone
- . Stepless adjustable sensitivity
- . Real-time monitoring
- . Strong shielding and anti-noise mic
- . LED work indicator light
- . Working condition indicator



Universal for
Camera&Phone



Stepless Gain
Adjustment



Real-time
Audio Monitor



Working Indicator

Package list



Body of Converter



Back Clip



Carrying Case



Instruction Manual

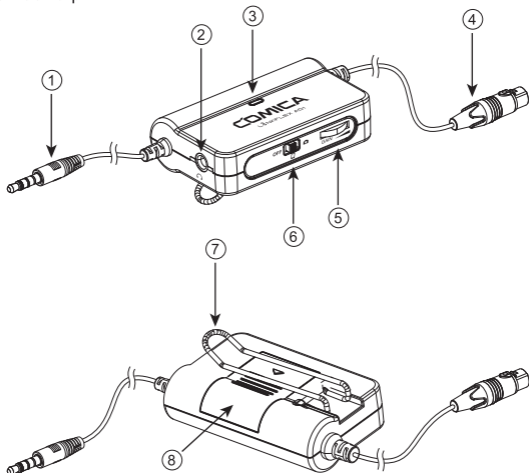


Warranty Card

Components

Microphone

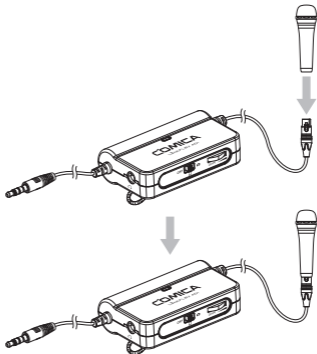
- ① 3.5mm audio output line
- ② Monitoring jack
- ③ Work indicator light
- ④ XLR input jack
- ⑤ XLR input jack
- ⑥ Gain Control Wheel
- ⑦ Power / Camera / Smartphone Switch
- ⑧ Back clip



Installation and Use

Before use

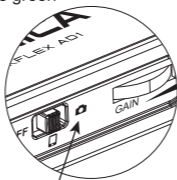
Insert the XLR Microphone into the XLR input interface



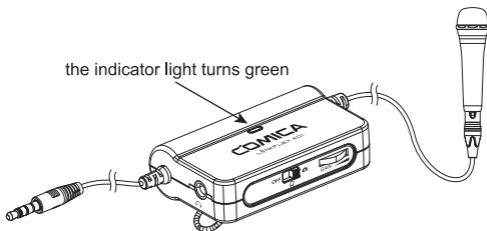
- ☞ a. When used with smartphone, please purchase separate audio cable adapter with corresponding interface.
- b. For the Android system smartphone, the microphone works well in default audio mode, but default video mode will happen with incompatibility trouble while working with some smartphone. (Then we suggest you try the 3rd party's video APP); For the iOS system phone, the microphone works well in all default audio mode , video mode, and 3rd party's APP.
- c. While used for smartphone, please set the smartphone to fly mode to avoid any interference.

1.Used with camera

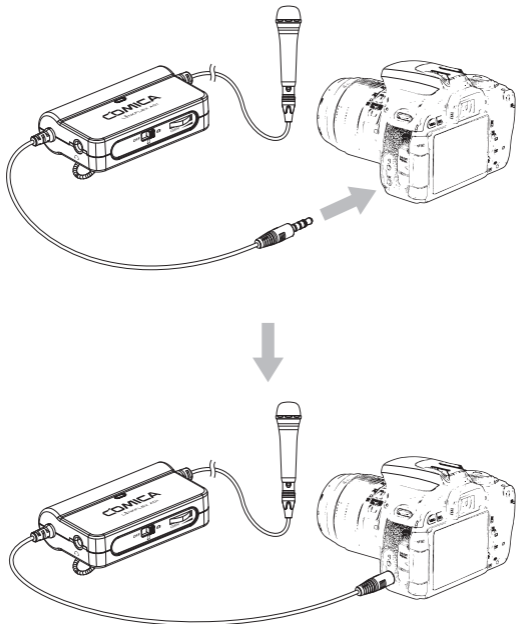
- 1.1 When used with camera, move the switch to camera, the indicator light turns green



Move to camera on the right side



1.2 Insert the 3.5mm output connector into the 3.5mm input interface of the camera for recording

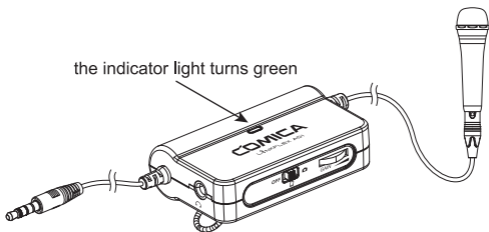


2. Used with smartphone

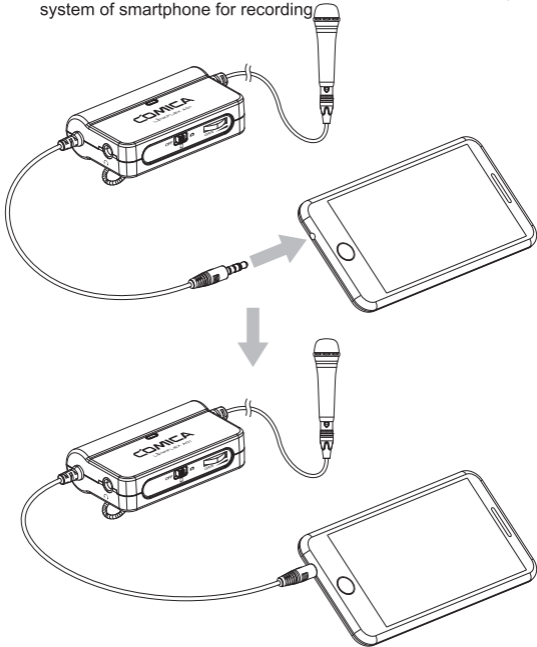
- 2.1 When used with smartphone, move the switch to smartphone, the indicator light turns green



Move to smartphone in the middle



2.2 Insert the 3.5mm output connector into the 3.5mm input interface of the smartphone and used with the recording system of smartphone for recording



Function Description

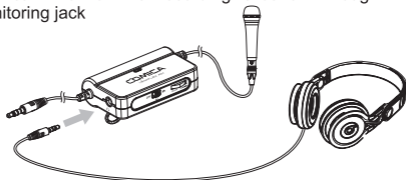
1. Gain Control Wheel

During the usage, the Gain Control Wheel adjust the output sensitivity of microphone



2. 3.5mm monitoring jack

You can monitor the recording situation through the 3.5mm monitoring jack



3. On and off function switch

When the power of the battery is low, the indicator light turns red, and the battery should be replaced. When not in use, please move the switch to OFF, turn off the machine.



Move to power switch on the left side

Specification

| | |
|---------------------|---|
| Input | 3 pin XLR interface |
| Output | 3.5mm connector |
| Gain Range | Maximum increase +10dB |
| Frequency Range | 20Hz - 20kHz \pm 1dB |
| Distortion + Noise | <0.02%, RL=2k Ω , f=20~20KHz, Vo=0.7Vrms |
| Battery | CR2032 3V |
| Working Temperature | 0°C ~ +50°C |
| Storage Temperature | -20°C ~ +60°C |

LINKFLEX-AD1

LinkFlex 麦克风前置放大转接器（相机、手机通用）



前 言

感谢您购买科唛LINKFLEX-AD1麦克风前置放大转换器（相机手机通用）。

此产品可搭配卡侬接口麦克风转接到手机、相机进行音频录制。它设计有支持增益调节、手机/相机切换开关、实时监听、工作指示灯、CR2032 3V电池供电、灵活的背夹等功能，能带给您更好的体验及音质效果。

使用前请认真阅读此使用说明书，本产品在出厂时已进行精密校准，请勿自行组装拆卸零部件，否则不予保修！

注意事项

- ⚠ 当配合手机使用时请另外购买相关音频输入接口转换线
- ⚠ 配合Android（安卓）系统的手机使用时，录音模式下均可正常工作，视频模式下部分手机会出现不兼容情况（此时建议使用第三方视频软件，如：抖音，快手等）；
配合iOS系统手机使用时，在所有录音模式、视频模式以及第三方视频软件下均可正常使用
- ⚠ 当用于手机时，请将手机设置为飞行模式，以避免信号干扰
- ⚠ 使用时请远离热源或干扰源
- ⚠ 使用时请避免掉落，碰撞或重击
- ⚠ 请勿在下雨或潮湿环境环境中使用，否则会有短路的危险

产品主要功能

- . 相机手机通用
- . 无级增益可调
- . 实时监听
- . 超强屏蔽、抗噪咪头
- . LED工作状态指示灯



相机手机通用



无级增益可调



实时监听



工作状态指示

包装清单



转换器主体



背夹



手提袋



说明书

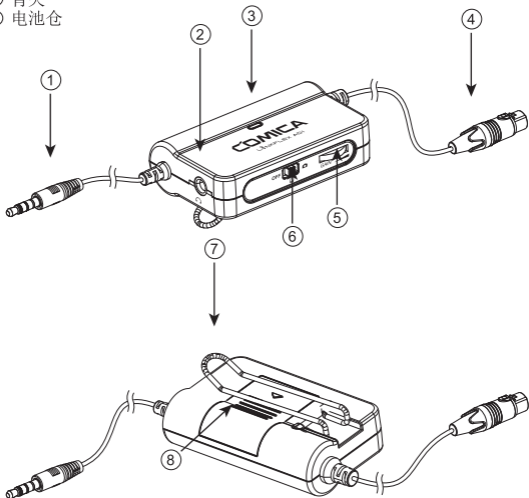


保修卡

部件介绍及说明

麦克风

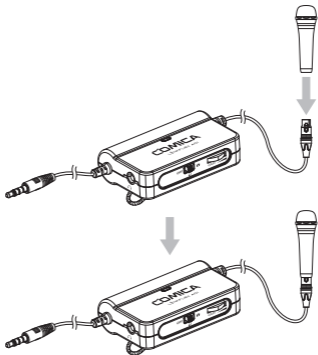
- ① 3.5mm 音频输出线
- ② 监听孔
- ③ 工作指示灯
- ④ 卡侬输入接口
- ⑤ 增益调节拨盘
- ⑥ 电源/手机/相机转换开关
- ⑦ 背夹
- ⑧ 电池仓



安装与使用

使用前准备

将麦克风插入卡侬输入接口



- 👉 a. 当配合手机使用时请另外购买相关音频输入接口转换线；
- b. 配合Android（安卓）系统的手机使用时，录音模式下均可正常工作，视频模式下部分手机会出现不兼容情况（此时建议使用第三方视频软件，如：抖音，快手等）；
配合iOS系统手机使用时，在所有录音模式、视频模式以及第三方视频软件下均可正常使用；
- c. 当用于手机时，请将手机设置为飞行模式，以避免信号干扰

1. 搭配相机使用

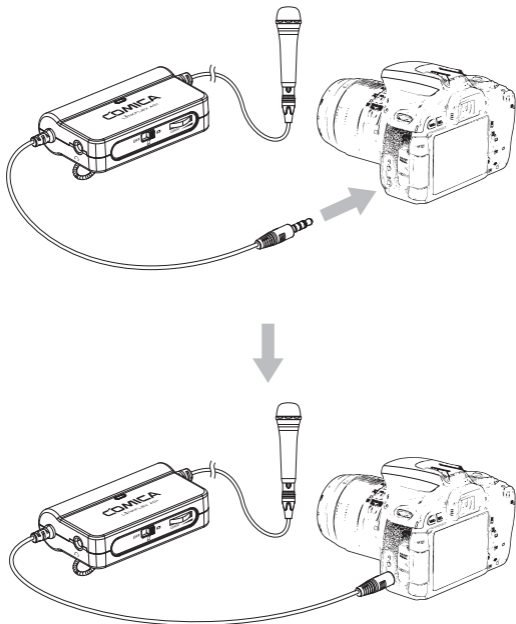
1.1 用于相机时, 将开关拨到相机档, 指示灯亮绿灯



拨至右侧相机档



1.2 把3.5mm输出接头插入到相机的3.5mm输入接口，即可以进行录音



2. 搭配手机使用

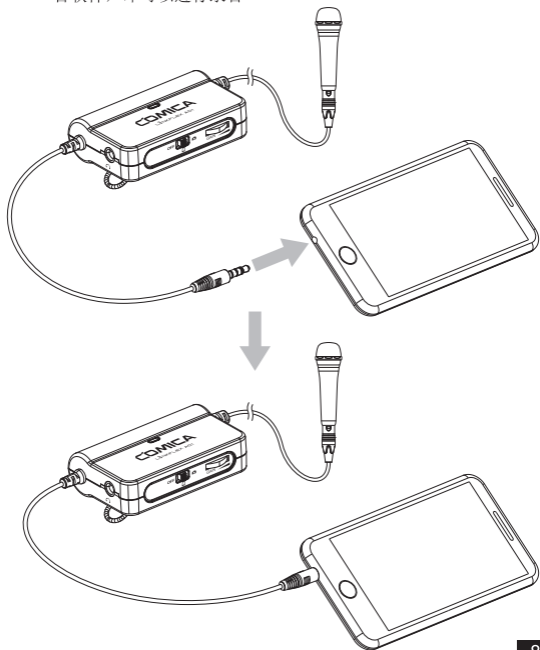
2.1用于手机时，将开关拨到手机档，指示灯亮绿灯



拨至中间手机档



2.2 把3.5mm输出接头插入到手机的3.5mm输入接口，打开手机的录音软件，即可以进行录音



功能解析

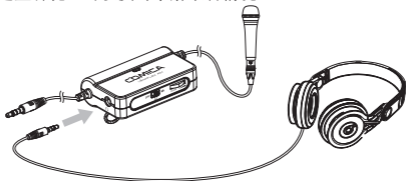
1. 增益调节拨盘

使用过程中，增益调节拨盘可以调节麦克风输出灵敏度



2. 3.5mm监听孔

通过监听孔，可以实时了解录音情况



3. 开/关功能切换

电池低电时，指示灯亮红灯，此时应该更换新电池使用。机器不使用时，请将开关拨动OFF，关闭机器



拨至左侧电源开关

技术参数

| | |
|----------|--|
| 输入 | 3针XLR接口 |
| 输出 | 3.5mm接头 |
| 增益调节 | 最大增加+10dB |
| 频响 | 20Hz - 20kHz \pm 1dB |
| 总谐波失真+噪声 | $<0.02\%$, $R_L=2k\Omega$, $f=20\sim 20kHz$, $V_o=0.7V_{rms}$ |
| 电池 | CR2032 3V |
| 工作温度 | $0^{\circ}C \sim +50^{\circ}C$ |
| 储存温度 | $-20^{\circ}C \sim +60^{\circ}C$ |



Website: comica-audio.com

Facebook: [Comica Audio Tech Global](#)

Instagram: [Comica Audio](#)

YouTube: [Comica Audio](#)

COMICA is a registered trademark owned by Commlite Tech Co.,Ltd

Email: support@comica-audio.com